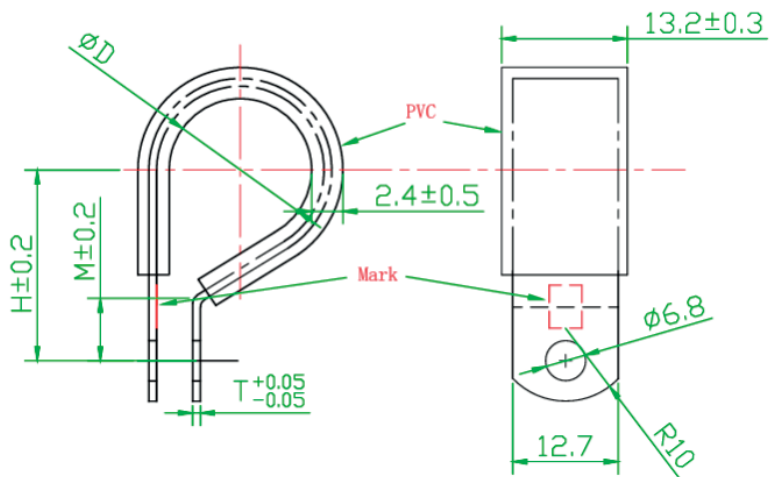



PART NUMBER	DESCRIPTION	WIDTH	DIAMETER	D (MM)	H (MM)	M (MM)	T (MM)
2904	VINYL COATED LOOM CLAMP	1/2"	1/4"	6.35	12.9	9.75	0.8
2906	VINYL COATED LOOM CLAMP	1/2"	3/8"	9.53	14.1	9.34	0.8
2908	VINYL COATED LOOM CLAMP	1/2"	1/2"	12.7	16.87	10.52	0.8
2910	VINYL COATED LOOM CLAMP	1/2"	5/8"	15.88	18.06	10.13	0.8
2912	VINYL COATED LOOM CLAMP	1/2"	3/4"	19.05	19.67	10.15	0.8
2914	VINYL COATED LOOM CLAMP	1/2"	7/8"	22.23	20.84	9.73	0.8
2916	VINYL COATED LOOM CLAMP	1/2"	1"	25.4	24.33	11.63	0.8
2918	VINYL COATED LOOM CLAMP	1/2"	1-1/8"	28.56	25.4	11.4	0.8
2920	VINYL COATED LOOM CLAMP	1/2"	1-1/4"	31.75	26.48	10.58	0.8
2922	VINYL COATED LOOM CLAMP	1/2"	1-3/8"	34.93	28.63	11.3	0.8
2924	VINYL COATED LOOM CLAMP	1/2"	1-1/2"	38.1	30.78	11.73	0.8
2926	VINYL COATED LOOM CLAMP	1/2"	1-5/8"	41.28	32.93	12.4	0.8
2928	VINYL COATED LOOM CLAMP	1/2"	1-3/4"	44.45	35.08	12.6	0.8
2930	VINYL COATED LOOM CLAMP	1/2"	1-7/8"	47.63	37.23	12.9	0.8
2932	VINYL COATED LOOM CLAMP	1/2"	2"	50.8	38.57	13.17	0.8
2940	VINYL COATED LOOM CLAMP	1/2"	2-1/2"	63.5	45.1	13.55	0.8
2942	VINYL COATED LOOM CLAMP	1/2"	3"	76.2	61.63	13.6	0.8



NOTES:  
 1. THE SURFACE OF THE MATERIAL IS ELECTROPLATED WITH BLUE AND WHITE ZINC WITHOUT BURRS;  
 2. THE COATING TYPE IS PVC, AND THE LENGTH OF THE COATING SKIN IS GENERALLY 1-2 MM AWAY FROM THE BEND OF THE PRODUCT, THE SINGLE SIDE THICKNESS OF THE COATING : 0.8MM;  
 3. DENOTES DIMENSION IN MILLIMETERS.

	VINYL COATED LOOM CLAMP
	MATERIAL
COATING THICKNESS	0.8MM
DIAGRAM NOT TO SCALE	